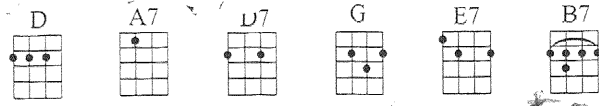
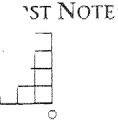


Bill Bailey, Won't You Please Come Home

14

Words and Music by HUGHIE CANNON

Intro



Brightly
D

syncopate

Won't you come home, Bill Bai - ley, won't you come home?

She cries the whole day long. I'll do the

cook - ing, hon - ey, I'll pay the rent. I know I've done you

wrong. Mem - ber that rain - y eve that I drove you

out with noth - in' but a fine - tooth comb? I

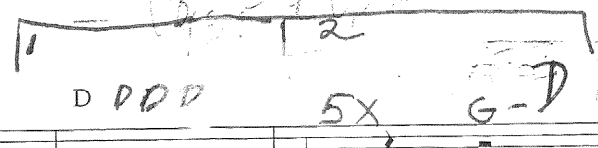
know I'm to blame, well, ain't that a shame? Bill

Bai - ley, won't you please come home?

(Whisper)

syncopate

(forte)



2020

Bill Bailey, Won't You Please Come Home

Cut time*

Key of D Major (F#, C#)

| | | | |
|-------------------------|-------------------------|---------------------|-------------------|
| D Won't you come | D home, Bill Bailey, | D won't you come | D home? |
| D She cries the | D whole day | A7 long | A7 gggg |
| A7 I'll do the | A7 cooking, honey | A7 I'll pay the | A7 rent. |
| A7 I know I've | A7 done you | D wrong | D gggg. |
| D 'Member that | D rainy eve that | D I drove you | D out with |
| D nothin' but a | D D7 fine tooth | G comb? | G I |
| G know I'm to | E7 blame, well, | D ain't that a | B7 shame? Bill |
| E7 Bailey, won't you | A7 please come | D home? | D |

* Cut time is 2/2 time. In common time (4/4), there are **four quarter beats** per bar. In 2/2 time – cut time – there are **two half beats** per bar. Two half beats per bar means the same thing as four quarter beats per bar. In this chord chart, one box represents one measure.

